



THE COMPLETE
SOLUTION OF
YOUR
**GRINDING
PROBLEMS**



HIGH PRECISION UNIVERSAL
CYLINDRICAL GRINDING MACHINE

www.bpigroup.in



BHAGWAN PRODUCTS INDIA

COMPANY PROFILE

Since 1964, **Bhagwan Products India** is the leading manufacturer of universal cylindrical & internal grinding machines, located in Ludhiana (Punjab) India. Spreading over a sprawling area of 15,500 sq. ft. The company was established under the supervision, guidance, and experience of S. Rattan Singh, having well-versed in the manufacturing of machines & machine tools items. We manufacture mechanical, hydraulic, NC & CNC controlled universal cylindrical & internal grinding machines. The company has sold more than 5200 machines throughout India as well as abroad.

Besides our standard machines, we can also manufacture machines according to customer requirements.

S. Rattan Singh started a new unit with the support of his son S. Dalbir Singh in 1996, near Sarinh Power House, Malerkotla Road, Vill. Alamgir, Ludhiana. Spreading over a sprawling area of 18,500 sq. ft. We started manufacturing HSS ground thread taps, thread rolls, milling & hob cutters etc.

Under  **Brand**, apart from that we are manufacturing automobile, agriculture & tractor parts.

We offer quality products at very competitive prices, ensuring value for money to various esteemed clients in diversified industries.

With state-of-the-art facilities equipped with latest machines and dedicated professionals, we are poised to deliver international standard quality products at the most affordable rates. We make sure that our offered range goes through a stringent quality check process after it is manufactured. Our adapt specialist, skilled engineers, efficient workforce & matchless resources enable us to serve the demands of various sectors with quality solutions. Moreover, on-time delivery schedules has given us a competitive edge in the market.

Our company encourages new ideas of manufacturing to offer a better quality of products.

Our mission is to provide the most reliable and durable products to suit our customers' diverse and challenging machining requirements.



INFRASTRUCTURE





BPI-300

◀ BPI-300



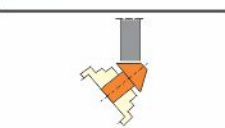
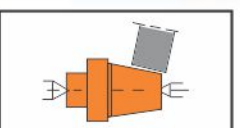
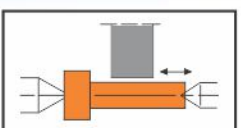
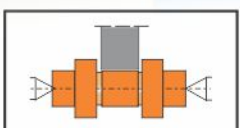
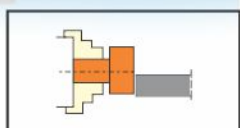
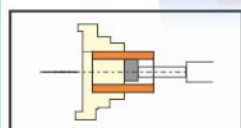
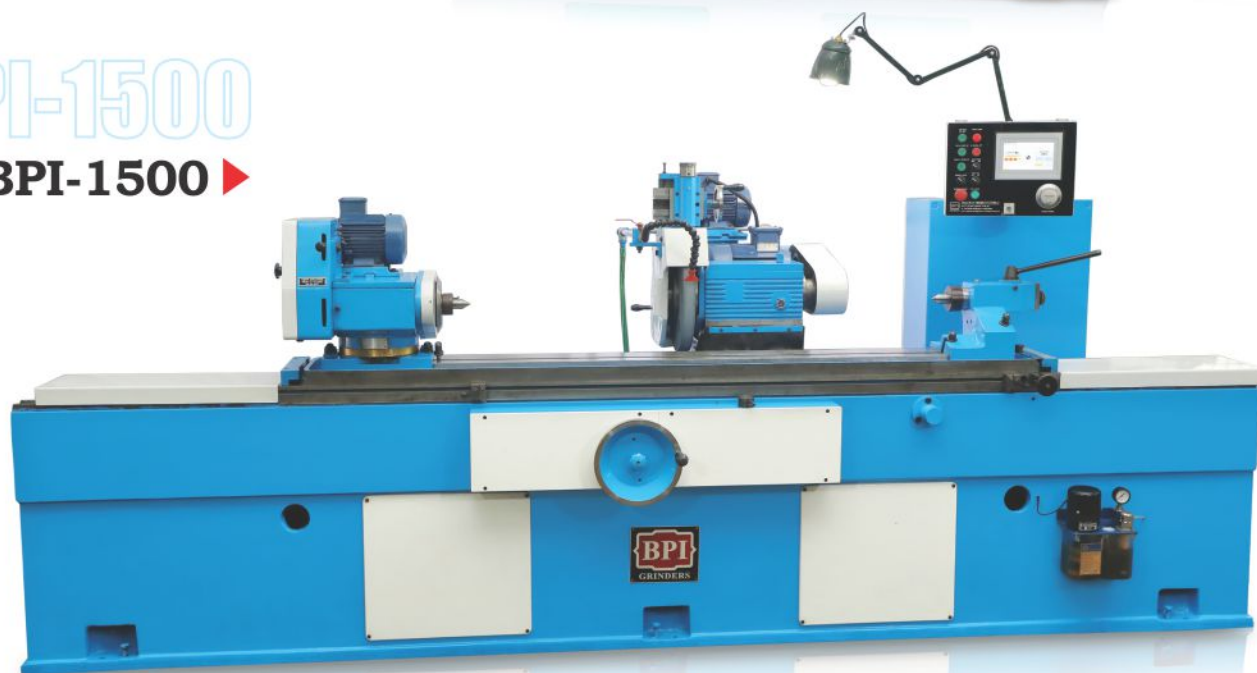
BPI-600 HYD.

BPI-600 HYD. ▶



BPI-1500

BPI-1500 ▶



Bed: The One Piece Bed Is Made Of Special Cast Iron Provided With Strong Ribbing For Rigidity And A Large Inverted Well-seasoned & Wide Track For The Table. All The Slide Ways Are Ground, On An Imported Highly Sophisticated Slide Way Grinder To Ensure The Highly Accuracy. The Casting Is Accomplished With High Grade Casting With An Appropriate Alloying Elements To Ensure The Hardness And Durability.

Table: Compounds Of Two Parts (Lower Slide Having Vee & Flat Ways And The Upper Swivelling Table) Can Be Adjusted For Taper Grinding Also. Taper Grinding Is Effected By Means Of A Fine Adjustment Screw 7° Scale. Two Adjustable Stops Are Provided For Limiting Longitudinal Table Travel.

Workhead: It Is Detachable And Built For Grinding Both With Revolving & Stationery Center. Power For Transmitted Through V-belts, From A Balanced Electric Motor, Fitted On It Thus Avoiding Vibration. Four Speeds Are Available To Suit Different Type Of Jobs. The Work Head Can Be Swivelled Up To 90° Towards Wheels & 30° Towards Operator To Grind Taper, Conical & Face Grinding.

Tail Stock: The Tail Stock, Designed To Travel Easily On The Table, Is Equipped With A Center Carrying Spindle Traveling In A Perfectly Honed Bore. The Tail Stock Spindle Is Spring Traveling In A Perfectly Honed Bore. The Tail Stock Spindle Is Spring Loaded Adjustable By Means Of A Knurled Knob And Is Operated Through Lever Plus Rack Gear. A Slight Rotation Of The Handle On Front Of The Tail Stock, Displace The Tail Spindle To The Rear, Thus Allowing Rapid Removal Of The Workpiece And The Insertion On A New Workpiece. MT3 or MT4 Tapers Center May Be Fitted In The Tail Spindle As Per The Specification & Size.

Wheel Head: The Wheel Head Is Designed To Raise The Efficiency Level For Operation, Decrease Overhang & Eliminate Vibration. The Complete Unit Can Be Swivelled Up To 60° On Either Side. Wheel Spindle Can Be Supplied With Taper Rollers or Bronze Bearing, If Specially Required. The Spindle Is Driven By A Balanced Electric Motor Through V-belt. Grinding Wheel Is Fitted On The Spindle Nose End Meant For The Purpose Mounted On A Wheel Flange. In Feed Movement Is Obtained Through Rotation Of Hand Wheel.

Int.Grinding Attachments: The Machine Is Attached With Internal Grinding Attachment Driven With Independent Motor Fitted On The Attachment Through A Plain Endless Belt Giving The Vibration Free Highest Efficiency. This Is Also Suitable For Grinding Cylindrical And Taper Holes.

TECHNICAL DATA

MODEL NO.:	BPI-300	BPI-450	BPI-600	BPI-1000	BPI-1500	BPI-2000
Max. Grinding Length	300MM	450MM	600MM	1000MM	1500MM	2000MM
Center Height	140MM	140MM	140/165MM	165MM	165MM	165MM
Max. Work Diameter Ground	270MM	270MM	270MM	325MM	325MM	325MM
Table Feed	Mech. / Hyd.	Mech. / Hyd.	Mech. / Hyd.	Mech. / Hyd.	Mech. / Hyd.	Mech. / Hyd.
Max. Swivel Of Table	7°	7°	7°	7°	7°	7°

WORK HEAD & TAIL STOCK.:

No. Of Speed Of Work Head Spindle	Variable	Variable	Variable	Variable	Variable	Variable
Morse Taper In Workhead	MT-3	MT-3	MT-3 / MT-4	MT-4	MT-4	MT-4
Swivel Of Workhead	90°	90°	90°	90°	90°	90°
Morse Taper In Tailstock	MT-3	MT-3	MT-3 / MT-4	MT-4	MT-4	MT-4
Work Head Motor 1440 Rpm	1 H.P.	1 H.P.	1 H.P.	1 H.P.	1 H.P.	1 H.P.

GRINDING WHEEL HEAD & TABLE FEED.:

Grinding Wheel	14"x1.½"x5"	14"x1.½"x5"	14"x1.½"x5"	16"x1.½"x5"	16"x1.½"x5"	16"x1.½"x5"
Grinding Head Motor 1440 Rpm	3 H.P.	3 H.P.	3 H.P.	5 H.P.	5 H.P.	5 H.P.
Wheel Head Swivel	60°	60°	60°	60°	60°	60°
Table Feed Motor 1440 Rpm	1 H.P.	1 H.P.	1 H.P.	1 H.P.	1 H.P.	1 H.P.
No. Of Speed Of Table Feed	3	3	3	3	3	3

INTERNAL GRINDING ATTACHMENT.:

Grinding Spindle Outer Diameter	60MM	60MM	60MM	60MM	60MM	60MM
Max. Quill Length	80MM	80MM	80MM	100MM	100MM	100MM
Quill Dia	15MM	15MM	15MM	18MM	18MM	18MM
Min. & Max. Dia of Hole Grinding	16-100MM	16-100MM	16-100MM	19-125MM	19-125MM	19-125MM
Spindle Speed	16000RPM	16000RPM	16000RPM	16000RPM	16000RPM	16000RPM
Int. Grinding Attachment Motor 2800 Rpm	1.5 H.P.	1.5 H.P.	1.5 H.P.	1.5 H.P.	1.5 H.P.	1.5 H.P.

COOLANT & HYDRAULIC TANK.:

Cap. Of Coolant Tank	165 ltrs.	165 ltrs.	165 ltrs.	165 ltrs.	165 ltrs.	165 ltrs.
Coolant Tank Motor	0.5 H.P.	0.5 H.P.	0.5 H.P.	0.5 H.P.	0.5 H.P.	0.5 H.P.
Cap. Of Hydraulic Tank	75 ltrs.	75 ltrs.	75 ltrs.	75 ltrs.	75 ltrs.	75 ltrs.
Hydraulic Tank Motor 1440 Rpm	1 H.P.	1 H.P.	1 H.P.	1 H.P.	1 H.P.	1 H.P.

WEIGHT.:

Approx. Gross Weight	2000 Kgs.	2500 Kgs.	2950 Kgs.	3400 Kgs.	4000 Kgs.	4300 Kgs.
----------------------	-----------	-----------	-----------	-----------	-----------	-----------

STANDARD EQUIPMNTS .: With All Electrical I.e. Motors & Electrical Panels, Coolant Pump & Tank With Piping, Grinding Wheel With One Wheel Flange, One Dresser With Dresser Holder, One Lamp, 2 Dead Centers, Wheel Spanner & Puller.

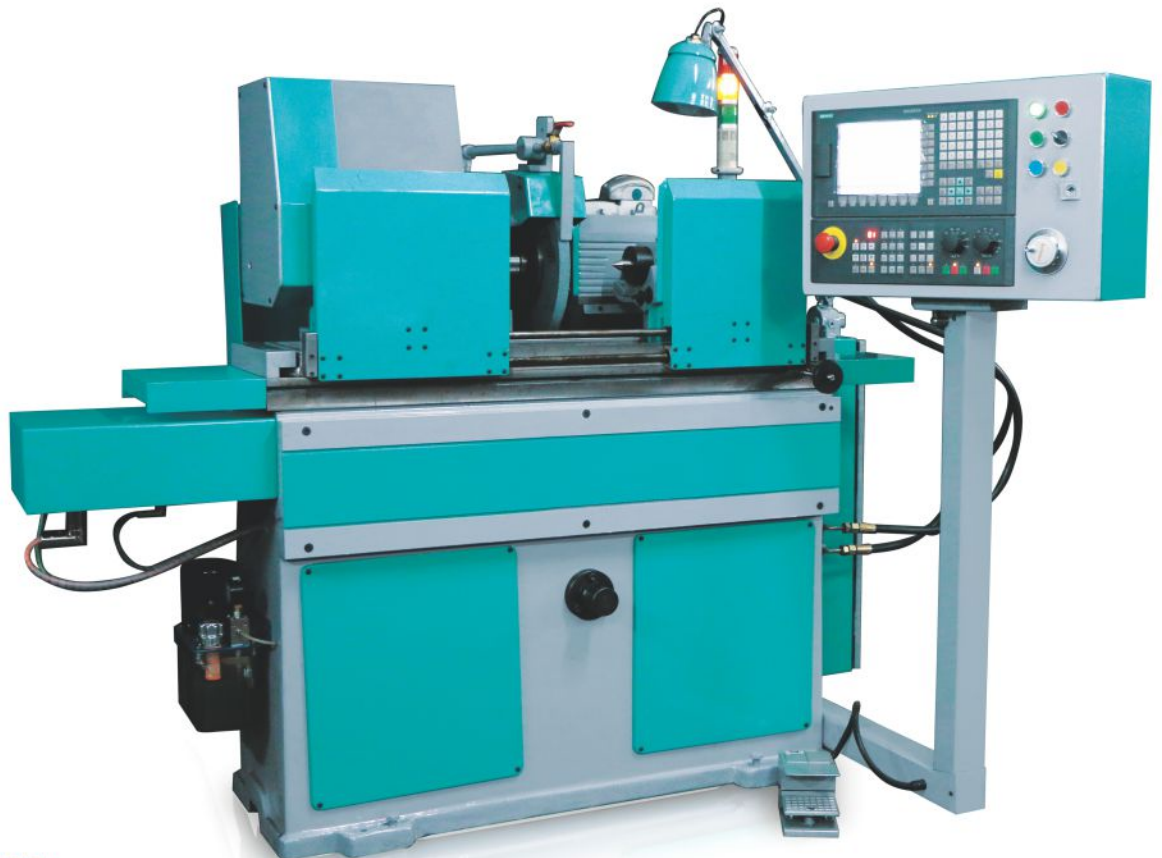
EXTRA ACCESSORIES .: » Two Point Steady Rest » Three Point Steady Rest » Wheel Balance Stand With Arbor » True Chuck » Independent Chuck » Magnetic Coolant Separator » Radius Dressing Attachment.

BPI-300 SX



BPI-300 SX

BPI-300 DX



BPI-300 DX

BPI-300 DX

BPI-300 DX



GENERAL

Centre Height	MM	140 / 165
Max. Grinding Length	MM	300 / 450 / 600
CNC / PLC System		SIEMENS / FUJI / DELTA
Rapid Feed (X & Z axes)	MM/MIN	7000
Min. Incremental Feed (X & Z axes)	MM	0.001

GRINDING WHEEL HEAD

Grinding Wheel Diameter	MM	355 / 405
Grinding Wheel Width	MM	25 / 38 / 50
Motor Power	HP	3 / 5

WORK HEAD

Speed Range	RPM	VARIABLE
Spindle Nose Taper	MT	3 / 4

TAILSTOCK

Tailstock Centre	MT	3 / 4
------------------	----	-------





BPI-300 INT

TECHNICAL DATA

MODEL NO.:	BPI-300 INT
Max. Grinding Length	150MM
Center Height	175MM
Max. Work Diameter Ground	200MM
Table Feed	Mech./Hyd.
Max. Swivel Of Table	7°
WORK HEAD & TAIL STOCK.:	
No. Of Speed Of Work Head Spindle	Variable/AC Drive
Morse Taper In Workhead	MT-4
Swivel Of Workhead	60°
Work Head Motor 1440 Rpm	1 H.P.
TABLE FEED.:	
Table Feed	Mech./Hyd.
Hydraulic Motor 1440 Rpm	1 H.P.
Table Feed Motor 1440 Rpm (Mech.)	1 H.P.
No. Of Speed Of Table Feed	3

INTERNAL GRINDING SPINDLE .:	BPI-300 INT
Grinding Spindle Outer Diameter	60-80MM
Max. Quill Length	30 to 150MM
Quill Dia	10MM to 30MM
Min. & Max. Dia of Hole Grinding	5-120MM
Spindle Speed	9000-18000
Internal Grinding Attachment Motor 2800 Rpm	2 H.P.
COOLANT & HYDRAULIC TANK.:	
Cap. Of Coolant Tank	125 Ltr.
Coolant Tank Motor	0.5 H.P.
Cap. Of Hydraulic Tank	75 Ltr.
WEIGHT.:	
Approx. Gross Weight	2000 Kgs.

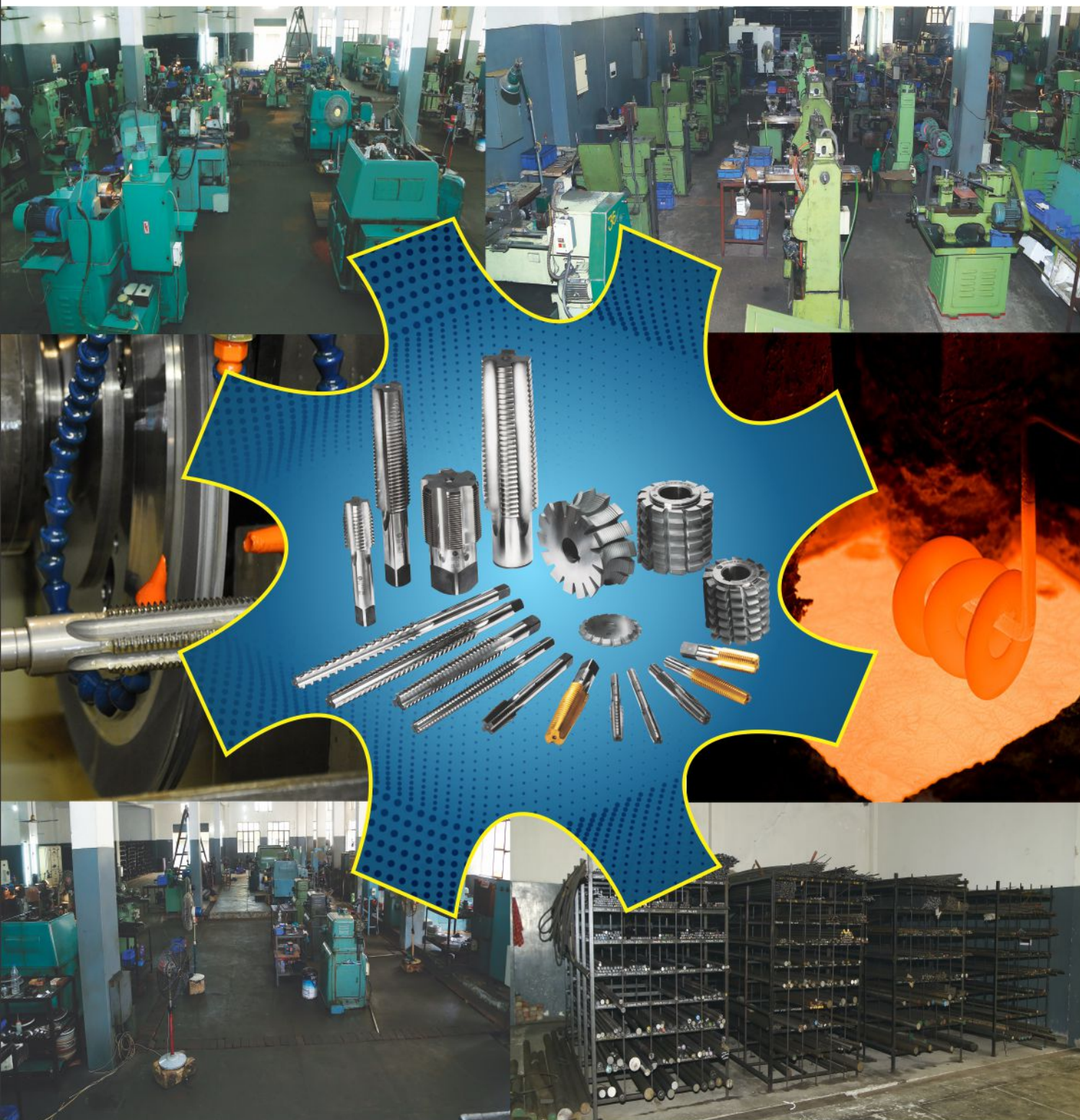


INFRASTRUCTURE



Bhagwan Products India located at Village Alamgir, Ludhiana.
Manufacturers of : H.S.S. Ground Thread Taps, Thread Rolls, All Types of
Milling & Hob Cutters, Thread Plug Gauges & Other Cutting Tools Etc.

GENUINE THREADING TOOLS



H.S.S. GROUND THREAD TAPS

HAND TAPS



SHORT NUT TAPS



NIB TAPS



SPIRAL FLUTE



LONG MACHINE TAPS



NUT TAPS



THREAD PLUG GAUGE



MILLING CUTTER



HOB CUTTER



THREAD ROLLS



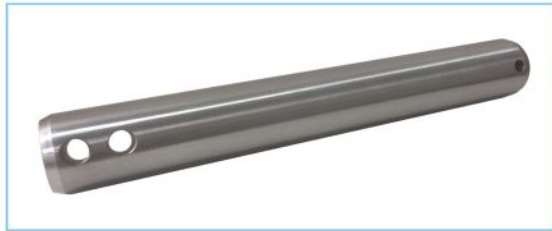
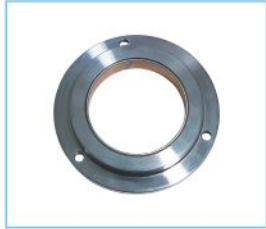
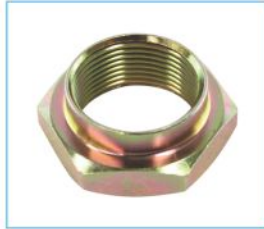
SPECIAL PROFILE TAPS





Bhagwan Products India

Manufactures Of : Various Range Of Products Viz Tractor, Machinery Parts, Automotive, Agriculture Components, Truck, Trailer Parts & Customised Engineering Parts.





BHAGWAN PRODUCTS (INDIA)

UNIT - I

- 📍 **Works & Office** : B-XXII-616/A, Opp. I.T.I., Gill Road, Ludhiana - 141 003. (Punjab.) INDIA
- ☎ +91-161-5007593, 5008593, 5004593
- ✉ bhagwanproducts@gmail.com, satnamtools@gmail.com
- 🌐 www.bpigroup.com



UNIT - II

- 📍 **Works** : Near Sarinh Power House, Malerkotla Road, Village Alamgir, Ludhiana -141 116 . (Punjab) INDIA